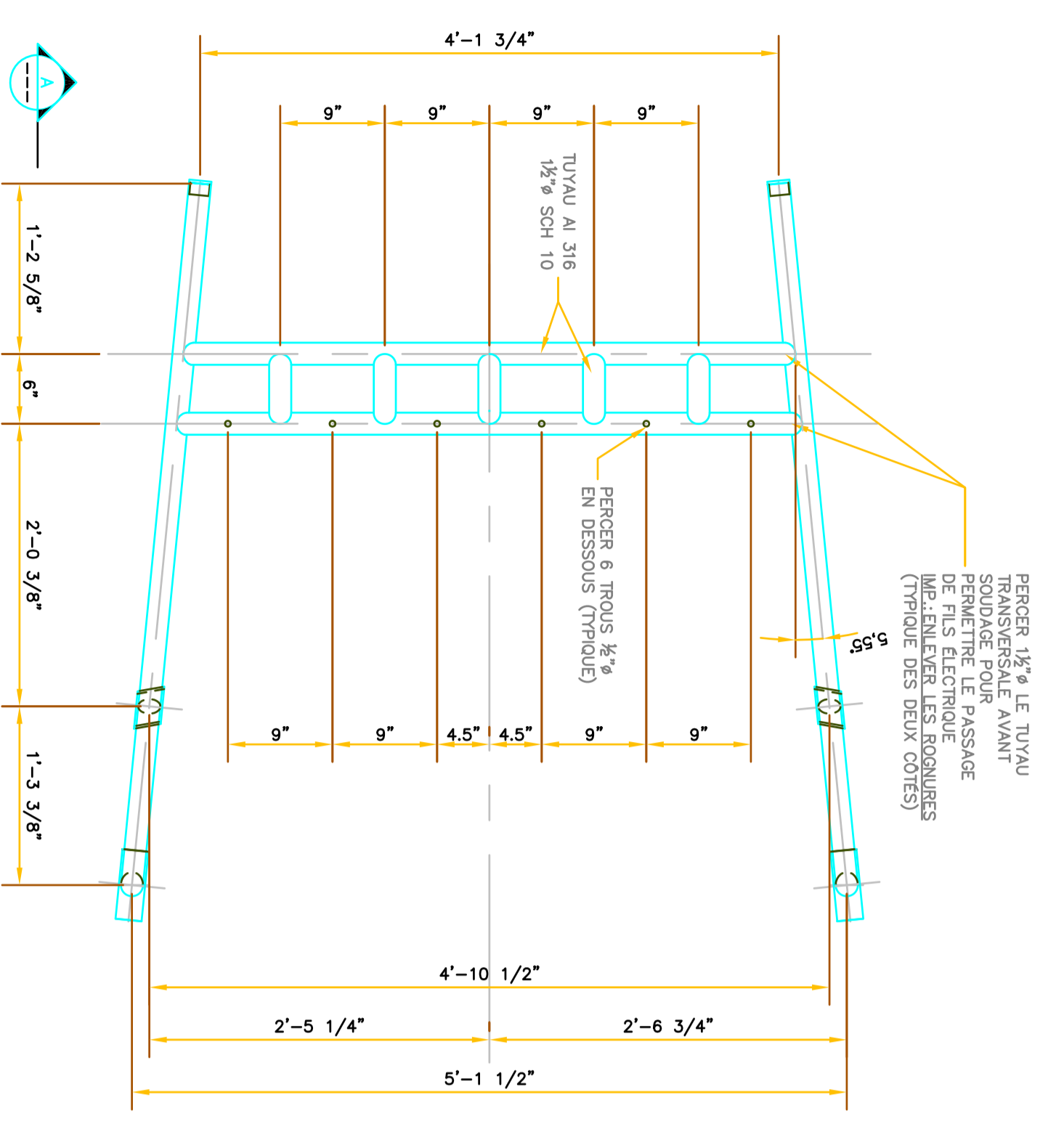
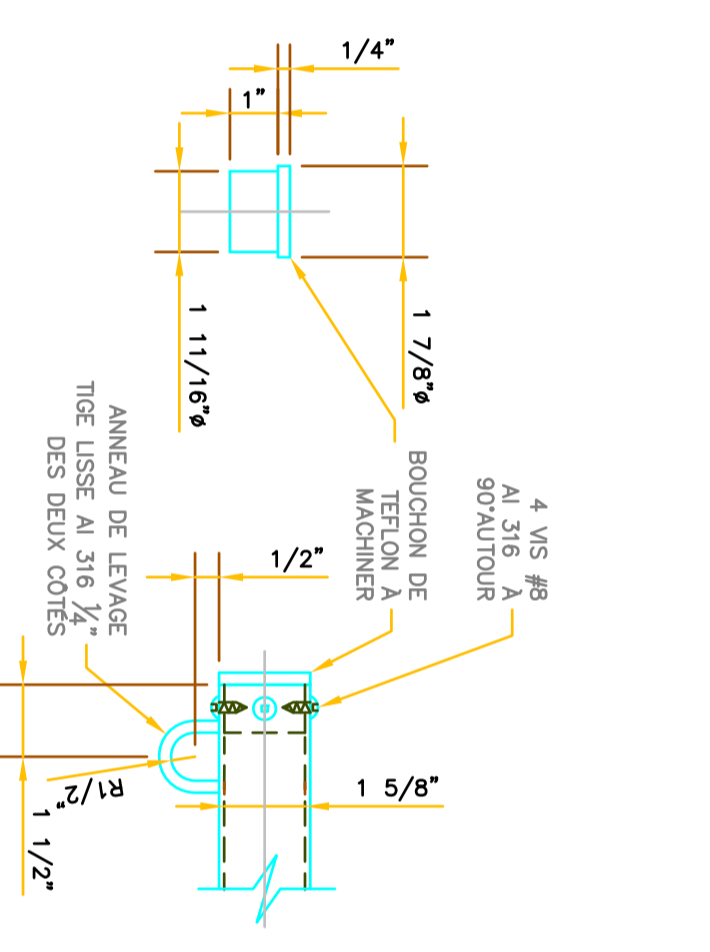


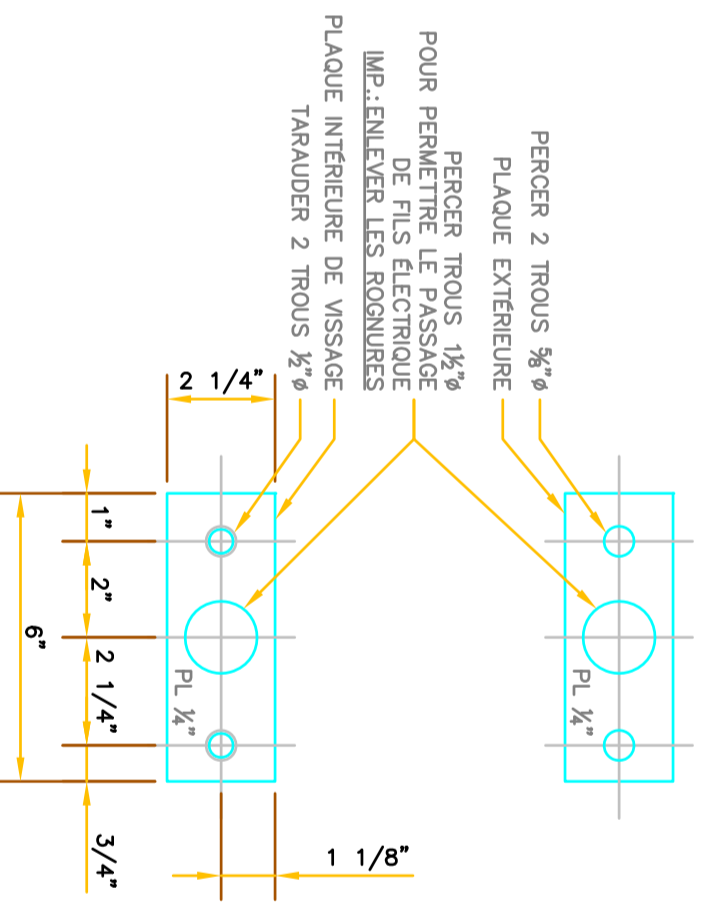
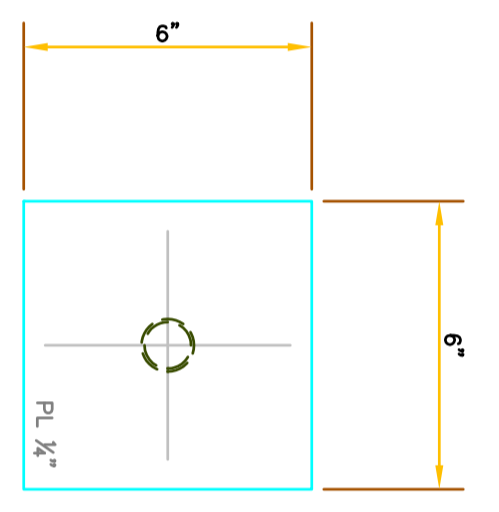
COUPE  
1"=1'-0"  
A



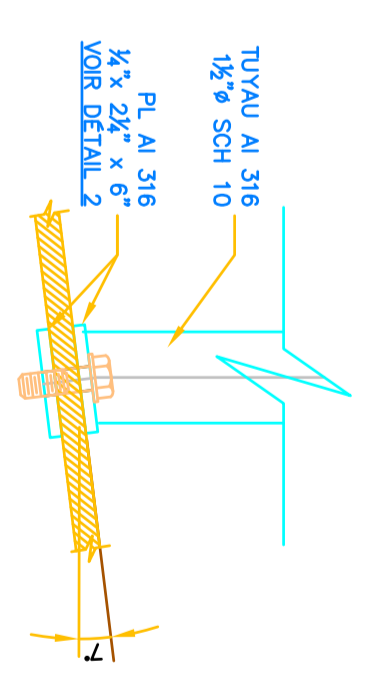
ARRANGEMENT 1  
1"=1'-0"



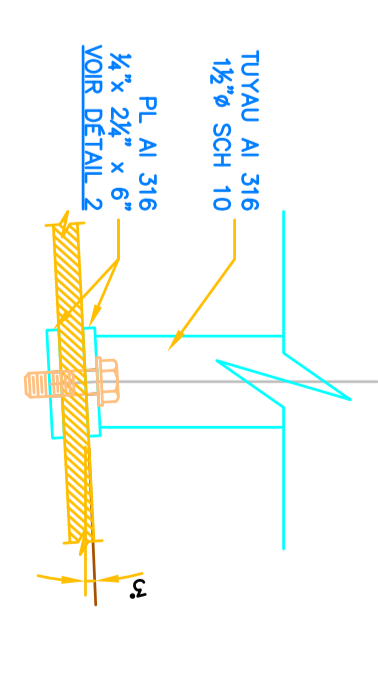
DETAIL  
3"=1'-0"  
2 REDUS



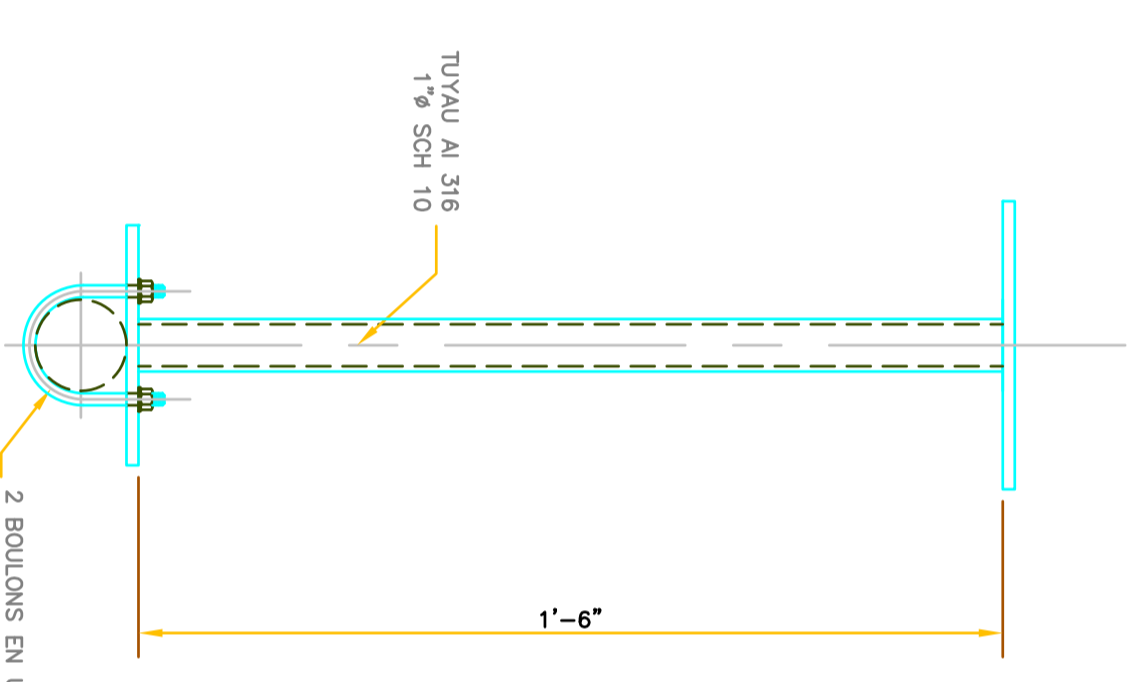
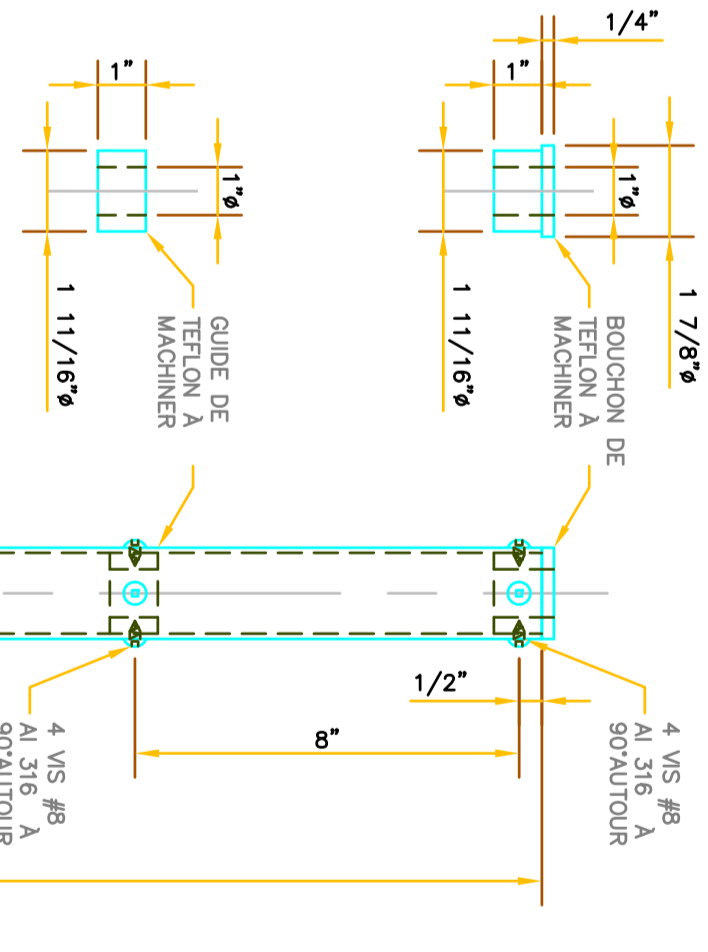
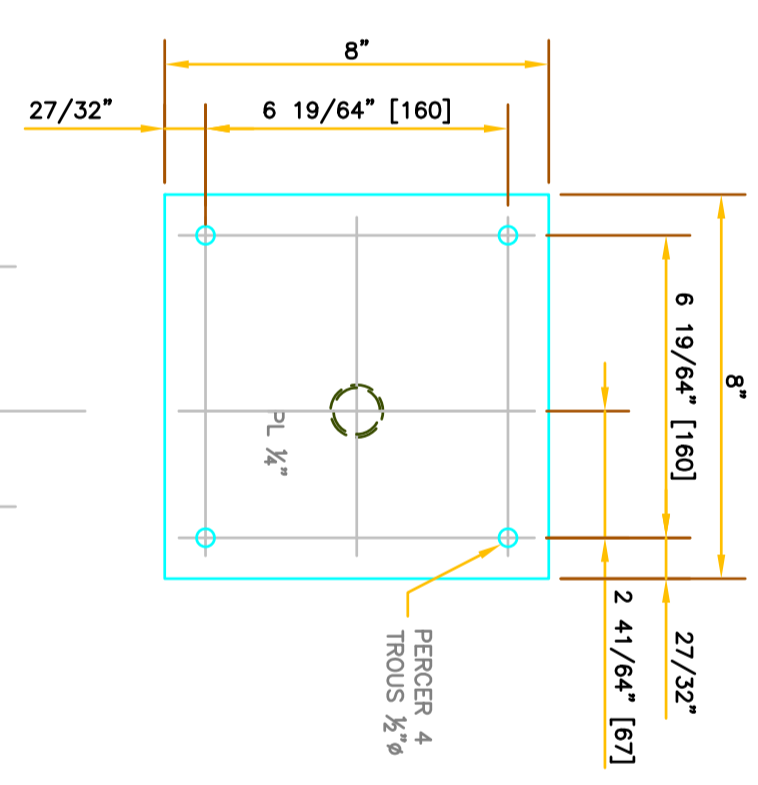
DETAIL  
3"=1'-0"  
4 REDUS



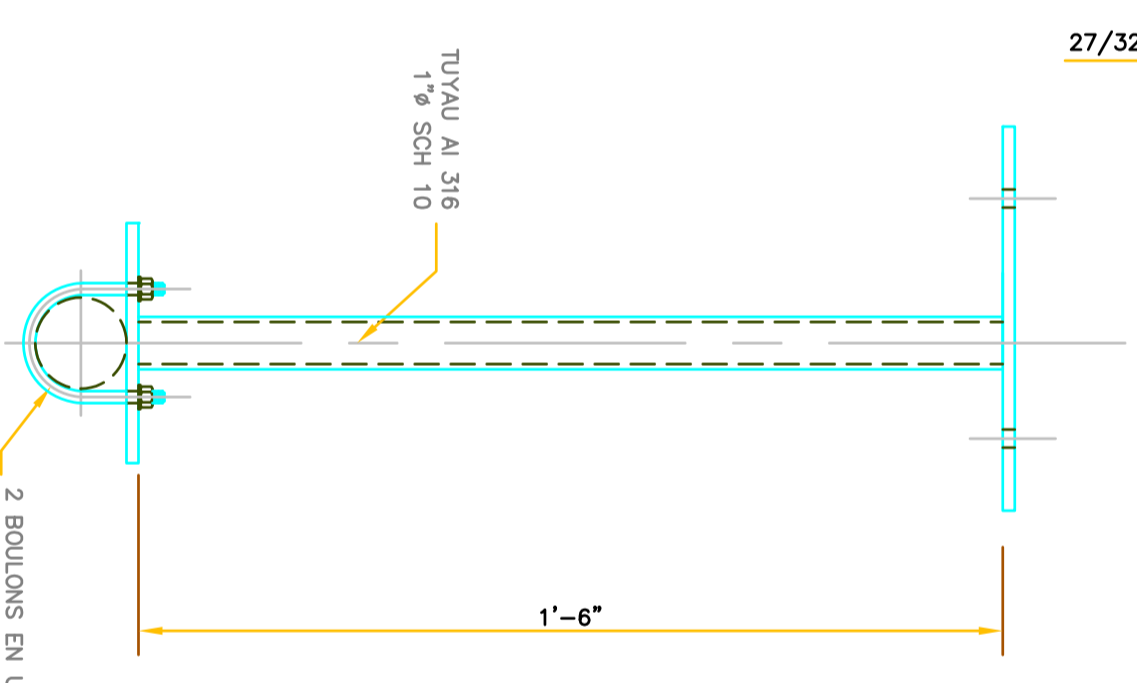
COUPE  
3"=1'-0"  
2 REDUS  
(1 COMME 2 REDUS  
(1 MIRROR NON-MONTRE)



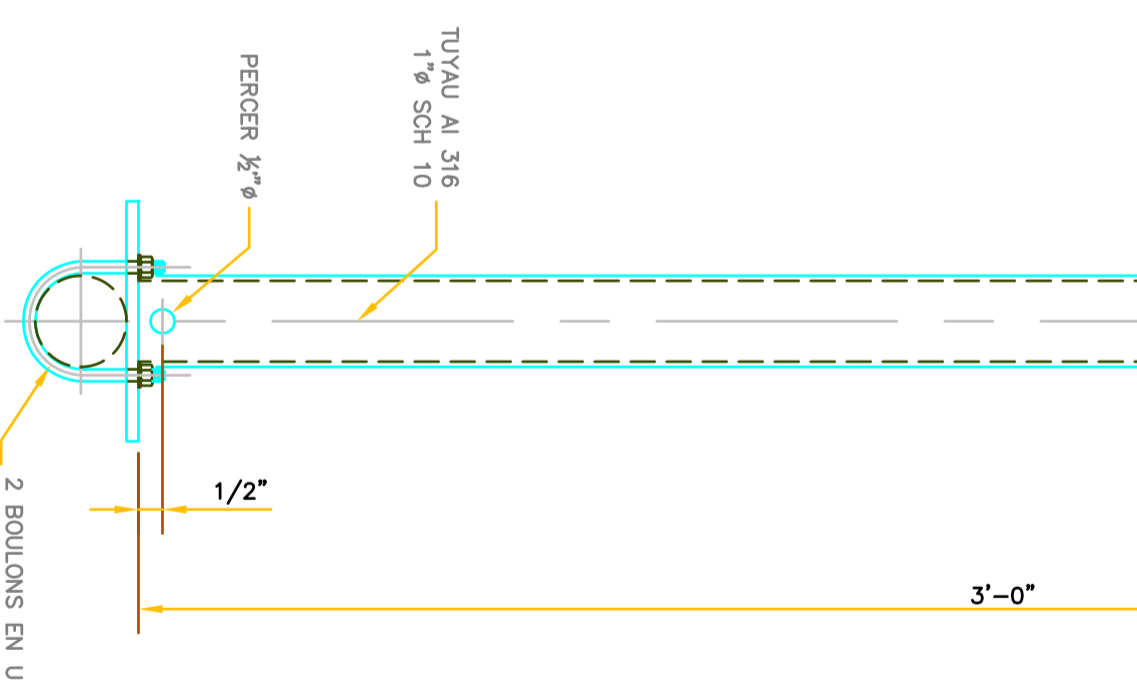
COUPE  
3"=1'-0"  
2 REDUS  
(1 COMME 2 REDUS  
(1 MIRROR NON-MONTRE)



ARRANGEMENT 2  
3"=1'-0"  
1 REDUS



ARRANGEMENT 3  
3"=1'-0"  
1 REDUS



ARRANGEMENT 4  
3"=1'-0"  
1 REDUS

- NOTES:**
- 1- MATERIAUX: AL 316L
  - 2- ASSEMBLAGE PAR SOUDAGE
  - 3- TOUTES LES SOUDURES DEVONT ETRE LISSE ET EXEMPT DE BAVURES
  - 4- LE FINI DE SURFACE SERA EXCOUTE AU LET DE BUILE DE VERRE FINI SATINE LA QUALITE DU FINI SERA A DEFINIR AVEC LE CLIENT

CLIENT	
No.	REVISION
PAR	DATE

WESTERLY CENTAUR 26  
VOILIER TRIBULL

TITRE  
ARCHE A BOSSOIRS POUR  
ANTENNES, EOLIENNE & DINGHY  
COUPES ET DETAILS

DESSINE PAR  
S.SAUVIER

APPROUVE PAR  
L.PERRON

**CayCauvier**  
Sylvain Perron  
Louise Perron

87, St-Antoine  
Gatineau (Quebec)  
J8T 3J9

RS&P (19) 561-4772  
RS&P (49) 965-5570  
RS&P (819) 790-1960  
Call (819) 790-1960

E-Mail: [cdv-edu-pe@sympatico.ca](mailto:cdv-edu-pe@sympatico.ca)

PROJET	03/4/16	ECHELLE	1"=1'-0"	REVISION	0
DATE	03/4/16	NUMERO DE DESSIN	CEN 26 02	FEUILLE	1 DE 1